

## CHAPTER-I INTRODUCTION

1. Inthlanna felfai nei tur chuan electoral roll felfai leh dik a pawimawh hmasa ber. Inthlanna thil fello leh tih dan tha lo tak tak, midang aia vote thlak leh thil rinhlhawm tak tak te hi electoral roll felloh vang a ni fo. Inthlanna vote nei tute tana thil fello leh diklo lo awm \hinte ven na \ha ber chu electoral registration leh electoral roll felfai taka siam hi a ni. Chuvang chuan electoral roll revision neih lai hian uluk leh fimkhur taka tih tur a ni.
2. Inthlanna fel leh dik tak nei thei tur chuan a bul a\anga rilru thianglim leh dik taka hmalak hi a pawimawh ber \hin/fo.
3. Roll revision leh Electoral roll siam tur hian he BLO Hand-book-ah hian thil pawimawh tak takte hrilhfiyah a ni a, thil pawimawh chi hrang hrang BLO te hriattur pawimawh a huamkim hle nachungin, Representation of the People Act, 1950 leh a hnuaia Rules-te leh thupek dang pawimawh Election Commission-in a siam \hin te thlakna a ni chuang lo.

### **Tunge BLO chu?**

BLO chu Local Government/Semi-Government-a hnathawk te, chumi an awmna Polling Area-a vote neitute leh a chenna veng chungga voter-te hrechiang tak, Roll revision atana mi pawimawh tak a ni. A nihna takah chuan BLO te chu Election Commission of India aiawh a, Electoral roll buatsaihnaa \angkai leh pawimawh tak, a \ul ang apiang lo thawk tura ruatte an ni a. Fulltime-a rawih an ni lo. A maherawhchu khua leh tui \ha an nih anga tih tur leh mawhphurhna a \ul anga mawhphurhna an hnena pekte an ni. | hian\ha ang chauh ni lovin roll buatsaih tute tana kaihruai tu leh \anpuitu an ni. BLO tinin Polling Station pakhat/pahnih ah mawh an phur zel ang.

### **Appointment of BLO**

Representation of the People Act, 1950 Section 13 B (2) angin Government/Semi-Government/Local bodies-a officers-te chu BLO atan ruat an ni \hin. Dan naranin BLO pakhatin Electoral Roll part pakhatah mawh an phur tlangpui \hin

a. DEO in Assembly Constituency (AC) tina ERO te rawnin BLO a ruat \hin a. Hengte hi BLO tana ruat theih te chu an ni.

1. Teachers
2. Anganwadi Workers
3. Patwari/Amin/Lekhpal
4. Panchayat Secretary
5. Village Level Workers
6. Electricity Bill Readers
7. Postman
8. Auxiliary Nurses & Mid-wives
9. Health Workers
10. Mid-day meal workers
11. Contract teachers
12. Corporation Tax Collectors, leh
13. (UDC/LDC etc)

2. BLO te hian an awmna Department hotuten tih tur leh mawhphurhna an pek te chu an thawk zel ang a, amaherawhchu election-a DEO te phalna la hmasa lo chuan transfer theih an ni lo.

3. Election thila a tih tur leh mawhphurhnate zo fel hmasa lovin engvang mahin leave a la tur a ni lo. Eng thil emaw avanga transfer a lo ni ta a nih pawhin, a aiawh tur hnenah election thila thil pawimawh, Paper te, Report te, Register te, leh Election Commission office a \anga a dawn te fel takin, hun ruat ral hmain a hlan kim tur a ni. A aiawh tu tur ruat ni lo chung a transfer a nih pawhin ERO in a rem tih angin Election thil a kawl zawng zawngte chu AERO emaw ERO hnenah a hlan fel hmasa tur a ni.

4. BLO te hi Roll Revision \anpuitu an nih angin Election Commission-ah deputation-a awm anga ngaih tur an ni a. Election Commission in an chungah thu neihna tawp a nei a, engpawh tusual se Section 32 of Representation of People Act, 1950 anga hrem tur an ni. (Annexure 1.2)

## BLO mawhphurhna leh tih tur te:

BLO te hian an kuta mawhphurhna leh tih tur te a bik takin Electoral Roll-a an part chan bikte an hrechiang hle tur a ni. Mawh a phurhna part chhunga Village/Tolas a mihring awmte a hrechiang hle tur a ni a, mitthi te, pem te leh electoral roll hmun khat aia tama hming chuante a chhinchhiahin, paih ngaite chu ERO hnenah a hriattir tur a ni a. BLO mawhphurhna pawimawh leh tih turte chu hengte hi an ni.

- Claims leh Objection awmte a dawng tur a ni.
- Hming awm nawn leh pemte insawnte pawh a hrekim vek tur a ni.
- In tin tlawh kual \hinin pem leh insawn leh electoral roll-a dan lo anga inthun an awm leh awm loh a hre vek tura ni.
- Electoral roll-a thun leh paih ngai emaw leh tihsual palhte a awm leh awm loh a enfiah vek tur a ni.
- Hming dik leh diklote leh an thlalak (photo) awm kim leh kimlote a enfel vek tur a ni.
- Electors-te thlalak a \ul angin a lakhawm tur a ni.
- Electors-te mobile number a \ul angin a lakhawm tur a ni. (Optional)
- Electors belh leh paih tur awm apiang ERO hnenah hriattir.
- Draft roll leh Notice pawimawhte a hmun dik taka tlangzarh leh tarlan.
- Hmun kilkhawr tinrenga roll chhiar chhuah leh RWA te hnenah a \ul ang apianga palai hnathawh.
- EPIC semdarh - A neitu diktak hnenah Epic hi pek tur a ni a, midang hnenah hlanhawn phal a ni lo.
- Vote thlak thei chin a tam thei ang ber Roll-a thuna Epic siam sak.
- SV E E P eg. K hawlaia bangah emaw Drama emaw a remchanga pawimawh dan tarlan
- NV D hmalakna National Voters Day-ah NV D thutiam mipuiten an lak laiin a kaihruai tur a ni a. He ni ngai pawimawh tur hian mipui a zirtir \hin bawh tur a ni.

- In leh voters in dawtdan tur dik leh fel taka vawn
- Booth Level Agents (BLA) te nena in\anpui tawn
- Mahni form dawn ang apiang chinfel thuai thuai
- Voter registration a hun taka miten an neih theih nana finchhuah
- Inthlan hmaa voters slip sem
- A veng thler mila awm thar leh awm hlui te hriat hran

### **BLOs Kit**

BLO tin te chu K it pek \heuh tur a ni a, K it chhungah chuan E lection Commission of India chhinchhiahna (logo) chuang bag dah vek tur a ni. Bag chhungah hengte hi a awm ngei tur a ni.

1. BLO Hand-book pakhat.
2. BLO's Register.
3. BLO Identity Card.
4. Writting pad leh paper eng emaw zat.
5. Blank register.
6. Pen, pencil, nawhrehna (eraser), ruler.
7. Form - 6, 6A, 7, 8 leh 8A eng emaw zat.

### **BLO te lawmman tur:**

- BLO lawmman hi Part pakhat (Polling Station) zelah kum khat atan ~3,000/- a ni a, part khat aia tam changte hnenah ~3,000/- bakah ~750/- part khat zelah pek belh an ni ang. Chumi baka thil dang a ken tel te chu:
  - ❖ BLO Part chan chhungah P E R 90% aia a tlem chuan thlalak pakhat thun luh manah ~4/- zel pek a ni ang.
  - ❖ 90% emaw, a aia a tam chuan thlalak pakhat thunluhah ~5/- zel pek an ni ang.

## CHAPTER-II RELEVANT CONSTITUTIONAL AND LEGAL PROVISIONS

### India dan puia a landan chuan (A nnexure 1.1)

1. Constitution of India Article 324(1) ah chuan MP leh MLA thlanna atana E lectoral rolls siam leh inthlan huaihawt chungchang thuneihna zawng zawng E lection Commission hnenah pek a ni.
2. Constitution of India Article 325-ah chuan constituency tinah E lectoral roll mi zawng zawng huap tura tih a ni a, sakhua, chi, hnam leh mipa/hmeichhia nih vangin tel loh ngawt theih a ni lo.
3. Constitution of India Article 326-ah chuan India khua leh tui tupawh kum 18 tling tawh chin, Roll ennawn kum January 1-a kum 18 tling chin, India khua leh tui ni si, chhia leh \ha hriatna hmang thei lo ni si lo, Criminal Case vang emaw Corruption leh dan kalha che dan in a phal loh ni si lo te chu E lectoral roll-ah hian thun vek tur tih a ni.

### **Representation of the People Act, 1950 and rules-ah chuan:**

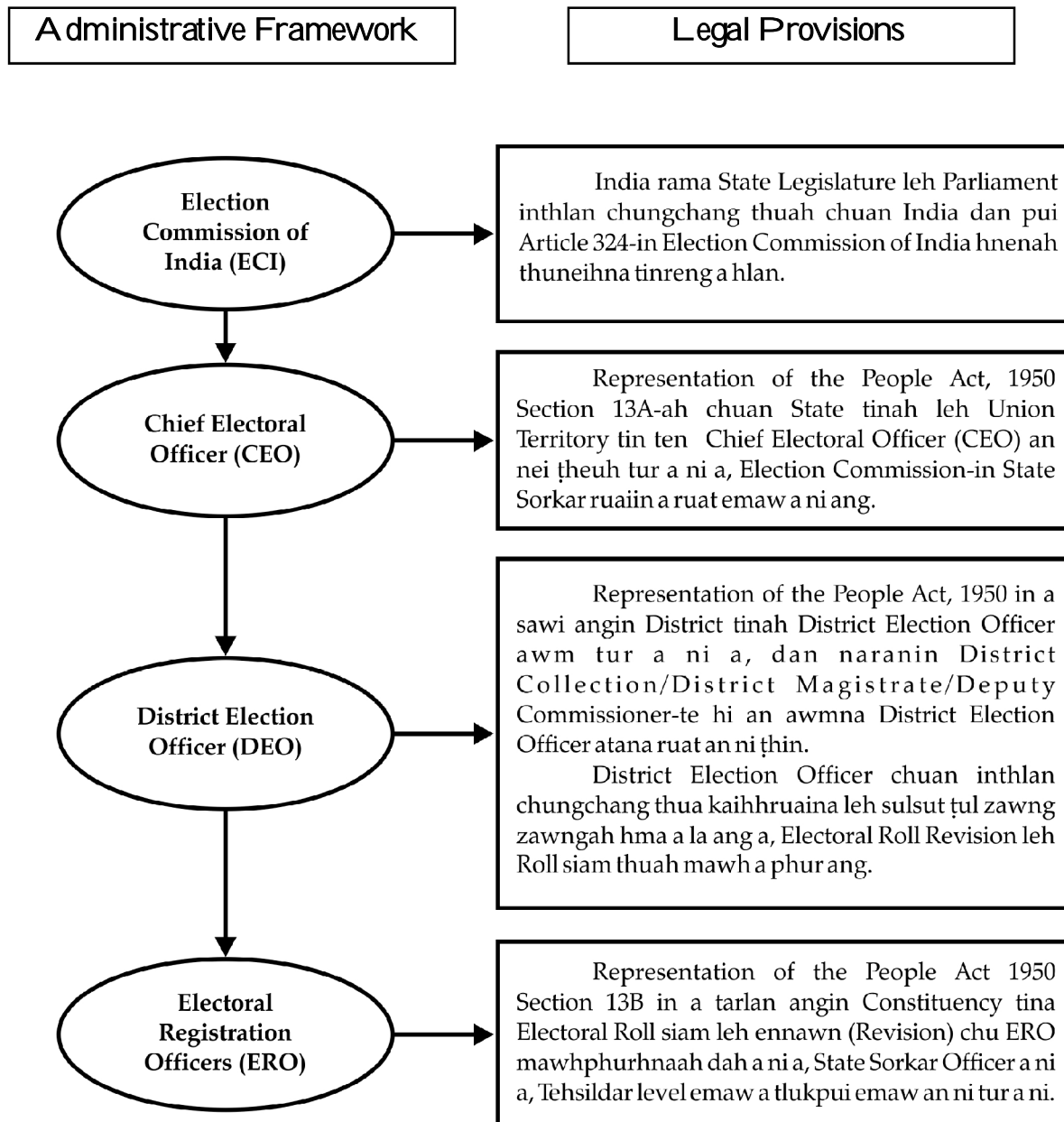
4. India Constitution Article 327-na (A nnexure 1.1) in thuneihna a pek angin Parliament in Representation of People Act, 1950 a siam a. RP Act, 1950 Section 28 in thuneihna a pek angin Central Sorkar chuan Registration of E lectors Rules (R E R) 1960 chu a siam bawk a ni.
  - 4.1 Representation of the People Act, 1950 Section 13A to 13CC-ah chuan Chief E lectoral Officer (C E O); District E lection Officer (D E O); E lectoral Registration Officer (E R O); Assistant E lectoral Registration Officer (A E R O) ect. ruat dan tur a chuang a (A nnexure 1.2).
  - 4.2 Representation of the People Act, 1950 Section 13D to 25A ah chuan E lectoral roll siam leh ennawn leh registration tih theih dan a tarlang. (A nnexure 1.2).
  - 4.3 Representation of the People Act, 1950 Section 20A chuan India ram pawna awm India mi leh sa te E lectoral roll a thun ve theih an nih dan a tarlang (A nnexure 1.3).

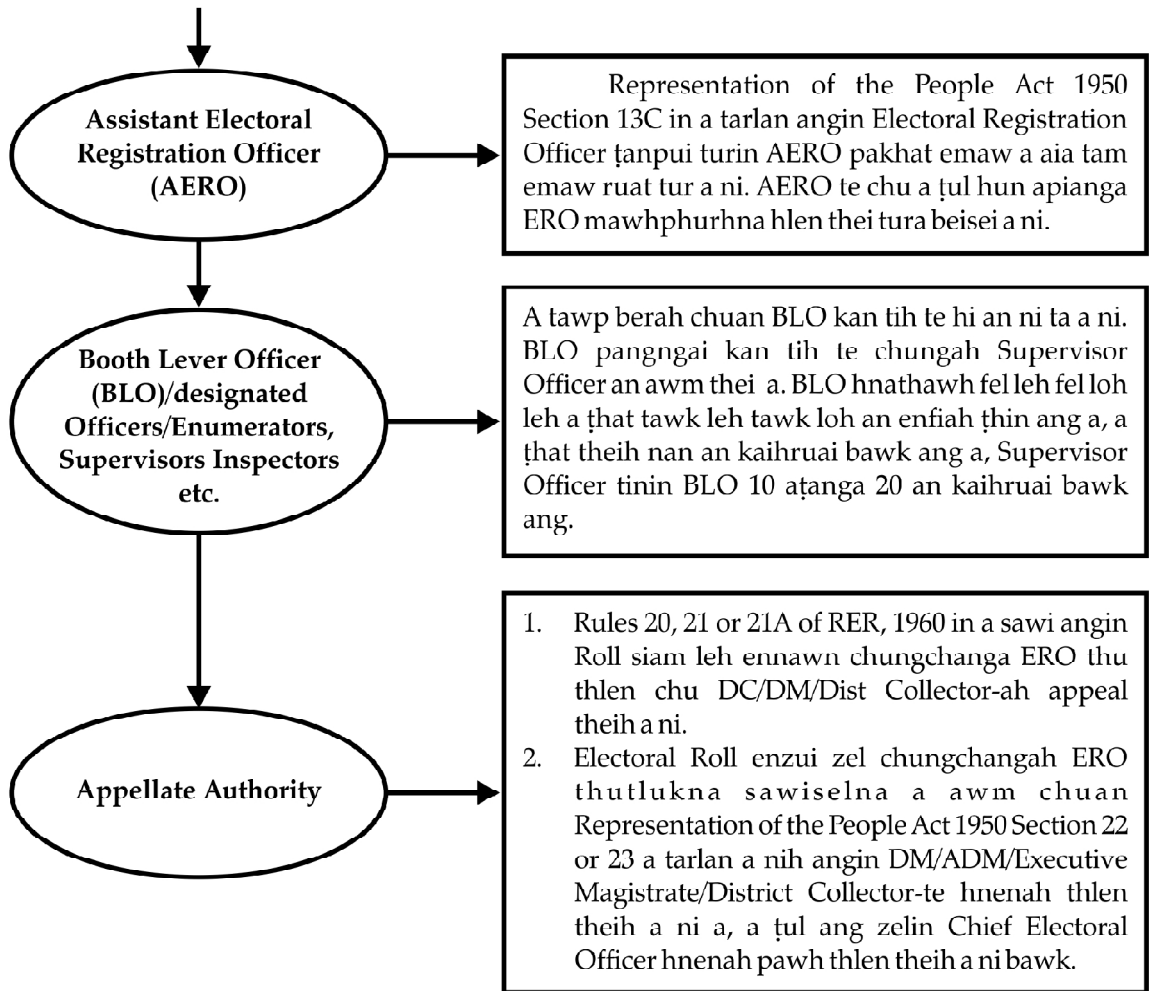
- 44 Representation of the People Act, 1950 Section 32A chuan Sorkar hnathawk Electoral roll siamnaa duty hna an thawh laia dan bawhchhiate hrem theihna a tarlang (Annexure 1.2).
  - 45 Registration of Electors Rules 1960, Rules 4 to 22-ah chuan Electoral roll siam dan leh ennawn dan indawt dan chi hrang hrang a tarlang (Annexure 1.4).
  - 46 Registration of Electors Rules 1960, Rules 8A-ah chuan India ram pawna India khua leh tui awmte Electoral roll-a thun theih dan tur tarlan a ni. (Annexure 1.5).
5. RPA 1950 leh RE R 1960 in thuneihna a pek angin Election Commission chuan hriattirna chi hrang hrang a \ul hun apiangah a chhuah \hin a. Tin, thu pek leh thu eng emaw sawfiahnate a tichhuak fo bawk. (Annexure 1.6 to 1.13).
  6. Representation of the People Act, 1950 Section 11A chuan sum leh paia mi rinawm lo te leh an chung a thuneihna lek tuar mekte (convicted) Electoral roll a \anga paihchhuah theihna a tarlang (Annexure 2).

# CHAPTER-III

## ADMINISTRATIVE MACHINERY OF ELECTORAL SYSTEM

A hnuai a mi hi India rama Election thua thuneih dan indawt tarlanna a ni.





- **Disignated Officers:**

A chungah Officer turte ruat a nih bakah hian Rule 14 of RE Rules 1960 Rule 14-in a phal angin a \ul angin E RO ten Designated Officers ruat belh theih a ni. Chung Officer-te chu, E lection Commission hnuaiah an awm tur a ni a. Chung Officer-te chuan E lectional R oll thun tur an pawm leh pawm loh te an hriattir ang a, puanzar \ul ang apiang an puang zar bawk ang. A \ul leh mamawh dan a zirin form 6, 7, 8, 8A te E lectors-te hnenah a pe chhuak \hin ang

- **Roll Observers:**

A chungah tarlante bakah hian E lection Commission-te chuan Roll Observers atan Senior Officer-te a ruat thei bawk. Chung Officer-te chuan a \ul angin E lectional R oll-te a fel tawk leh fel tawk loh sawi lawk lovin an enfiah ang.



A chung a Officer ruat zawn g zawn gte hi E lection Commission-ah Deputation a awm anga ngaih tur an ni ang a, an chung a thuneihna zawn g zawn g chu E lection Commission kutah a awm ang. (Section 13CC of R P Act, 1950 – Annexure 1.2).

## CHAPTER-IV GENERAL PRINCIPLES OF VOTER REGISTRATION

### **Electoral roll and its registration:**

Representation of the People Act, 1950 in a simple manner, may be explained as follows:

- a) Tahrik tlawhchhan tur ruat bik a\anga chhiara kum 18 aia tlem lo leh,
- b) Constituency pakhat huam chhunga khua leh tui pangngai.

### **Roll-a thun theih loh:**

1. Representation of the People Act, 1950 Section 16-in a tarlan angin heng mite hi roll-ah register theih a ni lo.
  - a) India khua leh tui a nih loh chuan
  - b) T huneihna nei court-in mi a-a a puan
  - c) H lemhlethna thila fihlim lo leh dan bawhchhiat avanga eng dan pawhin register theih loh tia a sawi te. (Sec 11A of R P Act, 1950 – Annexure 2)
2. A chungar tarlan anga Electoral Roll a\anga paihchhuah tawh chu Electoral Roll-ah thun leh theih a ni tawh lo.
3. Mi tupawh Constituency Roll-a thun tawh chu Constituency dangah thun leh theih a ni tawh lo. Tin, vawikhat roll-a thun tawh a nih chuan Representation of the People Act, 1950 Section 17 leh 18 in a tarlan angin khawi constituency roll-ah mah a hming thun nawn theih a ni lo.

### **Ordinary resident (Section 20 of the Representation of the People Act, 1950):**

Ordinary resident tih avmzia chu, mi tupawh hmun pakhat zana riah nan a hman chuan chumi hmuna cheng (ordinary resident) ah pawm a ni. Chu lai hmunah chuan eiin in lo mah sela, hmundangah daih chaw va ei \hin mah sela, chutianga reilo te a va thang bo chu ngaih pawimawh a ni lo. A chen hun chung

a rei emaw, rei lo emaw chuan a tibuai lo. Reilote atana hnathawhnaa a kal emaw; ama duhthua hun eng emaw atana a kal chhuak a nih pawhin harsatna/thu tlinga lak tur a ni lo.

### **Ordinary Resident tiha ngaihathiam: (Exceptions to the general principle of ordinary residence)**

1. Parliament Member leh Legislature Member-te chuan dinna Constituency-ah roll-a thun theih an ni. R P Act, Sec 20 (1B), (Annexure 1.2)
2. Jail tang, danin a phuar beh avanga dan hnuaia awm, hospital-a thawkte leh kutdawh dahkhawmnaa awm, mahni inhumhimna zawnga khawi emawa awm leh chutiang ang chi midangte chu chutianga an awmna Electoral roll-ah thun theih an ni lo. (Representation of the People Act, 1950, Section 20 (2) Annexure 1.2)
3. Zirlai hmundanga hostel-a awm; anmahni awmna khuaa haw a, an awmna hostel/zirna hmuna reilote atana kir leh \hinte chu chuta an awmna hmun atan chuan temporarily resident anga pawm an ni a. Anmahni'n an duh chuan Electoral Roll-ah thun ve theih an ni.
4. **Service Voters:** Dan naranin Central Sorkar hnuaia sipai emaw, State Sorkar hnuaia sipai emaw BSF, CRPF, CIAF, IDBP, NSG, GRE F leh Assam Rifle-te State hnuaia Police te leh Sorkar hnathawk reng reng anmahni awmna State pawnah emaw India ram pawnah emaw Post an nihin an in leh lo neihna hmun India ram khawiah pawh Electoral Roll-a thun theih an ni. Anmahni chauh ni lovin, an nupui/pasalte pawh chutiang chuan roll-ah thun theih an ni. (Representation of the People Act, 1950, Section 20 (3) Annexure 1.2).
5. **Overseas Electors :** India khua leh tui, ramdang Sorkar khua leh tui nihna engmah la neilo India ram pawna chengte chu India rama an awmna/chenna hmuna Electoral Roll-ah thun theih an ni. (Representation of the People Act, 1950, Section 20 A Annexure 1.3)

6. **Persons holding declared Offices:** India President, Vice President, Ministers, Minister of State leh Deputy Minister of the Union, Deputy Chairman leh Planning Commission, Lok Sabha Speaker leh Deputy Speaker, Rajya Sabha Chairman leh Deputy Chairman leh Parliamentary Secretaries of the Union leh State Sorkar hnuaia Sorkar Office lian chelh chin, Governor, Cabinet Minister, Minister of State leh Deputy Minister, State Legislative Chairman leh Deputy Chairman State Legislative Assembly-a Speaker leh Deputy Speaker, Parliamentary Secretary leh Union Territory, Lt. Governor-te chu anmahni hnathawhna/chenna constituency-ah electoral roll-a register theih an ni. A maherawhchu hetianga Sorkar Office lian chelhte hi anmahni leh midangte biak rawn awm te be rawna thun theih a ni. (Representation of the People Act, 1950, Section 20 (4) in a tarlan angin Annexure 1.2)
7. Tichuan a chungan kan tarlan tak hian Ordinary residence kan tihte hi in angkhat veka hman theih a ni lo va. Mumal lo taka ngelnghet lo taka a chenna hmunah Electoral Roll-ah thun a remchang mai lo va. Hun reilote atan awm bo \hin mah sela, a awmna hmun pangngai leh ngelnghetah chauh Electoral Roll-ah thun theih a ni.

## CHAPTER-V WHAT IS AN ELECTORAL ROLL

1. Danpui chuan Assembly Constituency (AC) tinah Electoral Roll siam a nih tur thu a tarlang a. Electoral Roll chu Assembly Constituency zul zuia siam leh enzui tur a ni.
2. Parliamentary Constituency (PC) tanah Electoral Roll hrang siam a ni lo va. Assembly Constituency atana siam chu Parliamentary Constituency atan pawh hman theih tur atan buatsaih a ni. Jammu & Kashmir leh Union Territories Legislative Assembly neilote chu a huam lo ang Jammu & Kashmir-ah chuan Parliamentary Constituency leh Assembly Constituency atan hian Electoral Roll a hrang siam a ni a. Union Territories-te chuan Legislative Assembly neilo te an nih chuan Parliamentary Constituency mila siam a ni.
3. Jammu & Kashmir-tan chuan Jammu & Kashmir Representation of the People Act, 1957 zul zuia Electoral Roll hi siam a ni a. Jammu & Kashmir dan puiin a tarlan khua leh tuite chauh Electoral Roll-ah hian thun theih an ni.
4. Registration of Electors Rules, 1960-a Rule 5 Sub Rule (1) in a tarlan angin a ram mualmut dan zul zuia thliar hran thliah thliah a ni a, chumi mil tur chuan Polling Station pawh siam a ni a, Vote thlaktuten a veng thler hlawm mila vote an thlak ho theihna tura siam a ni.
5. Electoral Roll siam hi roll siam leh ennawn kum January nikhata kum 18 tling thei tur chin bithliaha siam a ni \hin.
6. Kum tina Electoral Roll hi siam \hat a nih loh chuan Electoral Roll hman lai mek chu chhunzawm mai tur a ni.
7. Election Commission chuan \ul leh \ha a tih angin khawi Constituency Electoral roll pawh a siam \ha thei ang.

### **Lay-out and Structure of Electoral Roll:**

1. Assembly Constituency Roll tin chuan title page neiin siam a nih kum te ennawn a nih kum emaw, number, hming dinhmun dik tak a huam chin leh

number part dik tak leh serial number leh huamchin area-te fel takin a tarlang tur a ni. He Assembly Constituency Roll entirna hi Annexure 3.1 ah dah a ni. A title page chu a Constituency Map in a zui tur a ni a, a roll tawpah Summary Sheet-a awm tur a ni. (Annexure 3.2)

2. Electoral Roll-ah part tin te tarlan a ni a, chu chu Annexure 3.3 ah entir a ni a. Chulai area-a Polling Station Map ah chuan mihring chenna in, Section, veng leh building pawimawh Post Office a awmte a nih chuan tarlan \hin a ni a, tichuan Electoral Roll tawpah chuan Summary Sheet an dah a ni. (Annexure 3.4.)
3. Electoral Roll-a parts chu section te te anga thliar hran leh a ni a, chumi section tinah chuan in tina vote neitute indawt danin dah tur a ni a. Building pakhat a awmte chu Section hranga dah loh a \ha. Section thar chu phek thara \an tur a ni.
4. Election chungchang hi text roll-ah dah a ni a, thlalak te nen, a text roll chu Annexure 3.6 ah dah a ni a, photo roll erawh chu Annexure 3.5 ah dah a ni.
5. Dan naranin Electoral roll-a part pakhat hian E lector 1200 aia tam lo khawpui ah a huam a, thingtlangah erawh chuan mi 1000 aia tam lo a huam thung.
6. Electoral roll-a part hnukung ber chu Service Voters a ni tur a ni.

#### **Language of Electoral Roll:**

Electoral Roll-a \awng hman tur chi RE Rules-a Rule 4 in a tarlan angin Election Commission of India duh dan a ni tur a ni. T ihdan tlangpui ah chuan Assembly Constituency Electoral Roll chu a awmna State Official language hmanga siam a ni \hin a. A maherawhchu a mi cheng zaa sawmhnih aia tamin \awng dang an hman chuan a \ul leh pawimawh dan a zira thlak theih tho a ni. K hawpui lianah chuan English hman a ni tlangpui a, a part hnukung ber erawh chu Service Voters dahna hmun tur a ni a, English-a ziak tur a ni.

## Polling Station:

1. Electoral Roll-a part tin te chuan veng thler bithliah felfai tak a huam tur a ni a, chumi huamchhungah chuan rual tlang taka vote an thlak theih nan Polling Station a awm tur a ni.
2. Electoral Roll-ah chuan Polling Station number leh Station hming langsar taka tarlan tur a ni a. Electoral Roll part number leh Polling Station number chu a inang tur a ni.
3. Election Commission beisei dan chuan Voters te awmna a\anga 2 K M aia hla lo ah Polling Station hi a awm tur a ni a, chu chu a ngaih pawimawh hle tur a ni.
4. Polling Station pakhat huamchhungah Voters 1200 aia tam khawpuiah dah loh tur a ni a, thingtlangah erawh chuan 1000 aia tam dah loh tur a ni.

## CHAPTER-VI

### REVISION OF ROLL

#### Type of Revision:

1. Revision-ah hian chi li a awm a, chungte chu: (i) intensive, (ii) summary, (iii) partly intensive and partly summary, (iv) special.
2. Intensive Revision-ah chuan E lectoral Roll hmanlai hmang lova a thara siam a ni. Chutianga a thara siam a nih kumah chuan summary revision neih a ni ngai lo. BLO-in in tina chungkaw awmzat hre turin a tlawh hmasa phawt ang a, a vawihnihnaah vote nei thei tur chin a chhinchhiah ang a, an chungkaw hotu ber emaw a remchang hnenah vote nei thei tur chin a chhinchhiah a ziahna E lectoral Card chu a pe ang a, hetih lai hian hostel-awmte emaw mikhual leh kum upa leh naupangte leh zirlaite a thliar hrang fel hle tur a ni. Chutianga hrechiang chung chuan draft roll siam a ni a, paih leh thun turte pawh tih fel vek a nih hnuah final roll chu tih chhuah chauh tur a ni.
3. Summary revision chu intensive revision a awm loh chuan kumtin neih tur a ni. In kawkipa luh a ngai lo. E lectoral Roll hman lai chu tarchhuah niin belh leh paih theih hun hawn a ni a, belh leh paih turte tihfel hunah final roll siam a ni \hin.
4. Partly intensive and partly summary revision-ah chuan roll hmanlai chu draft roll anga tar chhuah a ni a, a inchhawk in BLO te chu in hrang hrangah belh leh paih tur te enfel tura tirh an ni a, chutianga tih zawh hnuah chuan final roll chu siam a ni \hin.
5. Engvang pawhin khawilai veng leh hmun emaw Section leh block bik ah emaw E lectoral roll diklo deuh a awm chuan E lection Commission-in chulai huam bik atan chuan Special Revision Order a chhuah ang a, intensive revision, summary revision or partly intensive or partly summary revision pawh a ni thei.



6. Chung bakah chuan continuous updation of roll tih a awm a, chu chu eng revision mah neih a nih loh laiin a ni a. Roll published hnuhnung ber tahrik ni (qualifying date) behchhana siam tur a ni.

### Preparation Of Electoral Roll:

#### Publication of draft electoral roll:

Registration of Electors Rules, 1960-a Rule 10-na angin Constituency atana Electoral Roll chu peih a nih veleh draft roll angin ERO chuan Form No. 5 hmangin a tarchhuak tur a ni.

- a) A office chu Constituency chhunga awm a nih chuan a office-ah a tar ang.
  - b) A office chu Constituency pawna awm a nih chuan Constituency huamchhung remchang a tihna hmunah a tar ang.
7. Chung bakah chuan chumi roll tarchhuah niah chuan PDF hmangin CEO in website-ah a tichhuak ang. A maherawhchu Electors te thlalak a lang tel tur a ni lo.
  8. Website a\ang chuan roll-a telh tur te chu chumi Constituency-ah emaw district-ah emaw Roll-ah an hming a chuang tawh em tih finfiah theih a ni tur a ni. Telh diltu ten hmun dangah an hming telh a nih leh nih loh hriain telh an nih loh hriain, telh an nih loh chuan a chhan pawh an hre thei tur a ni.
  9. Chutianga Assembly Constituency huamchhunga roll tarchhuahte chuan Electoral Roll pumpui a huam ang a. Service Voters-te pawh ERO Office-ah entheihin a awm tur a ni.
  10. Chutiang ang draft roll chu Polling Station tinah Electors ten anmahni in enfiah theih nan hmuh theihin a awm tur a ni.
  11. Roll tarchhuah ni hi Public Holiday a ni tur a ni lo.
  12. Electoral Roll chu \awng chikhat chauha siam a nih loh pawhin \awng chi hrang hrang hmanga siam a nih pawhin tarchhuah kim tur a ni.

## Claims and Objections during revision process:

1. Tarlan tawh angin E RO chuan roll revision neih tur thu chu Registration of Electors Rule, 1960 Form 5-na angin hriattirna a siam tur a ni a. Chu hriattirnaah chuan belh leh paih theih hun chungte, hming diklo tih dik theih hun chungte a tarlang tur a ni a. Chumi hun atan chuan a tlem berah ni 15, a rei berah ni 30 hun a pe tur a ni. Heimi chungchang thua hian Registration of Electors Rules 1960-a Rule 12-na in a thuneihna a pe a, a \ul anga tisei a ti tawi turin thuneihna a nei.
2. Chutianga draft roll tarlan a nih tawh chuan hming paih tur emaw, belh tur emaw tih dik ngai emaw chu hun tiam chungin tih fel tur a ni. A maherawhchu hengte hi a huam lo ang.
  - i) Election-a nomination siam theih hun ni hnukung ber hnuah chuan roll tihdanglam theih a ni tawh lo.
  - ii) Election Commission-in roll revision programme a tihchhuahin hming thun/paih theih hun a tarlang \hin a. Chumi hunte-ah lo chuan hming thun/paih theih a ni lo.
3. Revision Process hun chung hian E RO in Registration of Electors Rules 1960-a Rule 20 angin thunbelh turte Form 6 hmangin, hnialkalh duhte tan Form 7 hmangin, tihdik duhte tan Form 8 hmangin, leh roll-a mahni awmna sawn duh te tan 8A hmangin a chingfel tur a ni. Registration of Electors Rules 1960-a Rule 21-na hmangin E RO chuan eng emaw avanga lo hmahipalh leh kal kân palhte a thunbelh thei ang a, R E R 1960 Rule 21A hmangin eng emaw vanga lo thun nawn palh emaw leh lo telh palhte chu a paih thei bawk ang.

## Forms for Claims, Objections and Correction:

1. Electoral roll-a inthun lut duhte tan Form 6 & 6A (Annexure 4.1 & 4.2) hmangin mahni hming sign in dilna thehluh theih a ni. Photo rolls atan chutianga in thunluh duhte chuan anmahni thlalak leh hmingte Form 6 & 6A hmangin thehluh bawk tur a ni.

2. Mi, a awmna Constituency huamchhungah vek a chenna a sawn chuan Form 8A hmangin siam \hat ngaite siam \ha turin dilna a thehlut tur a ni.
3. Draft roll a\anga paih tura dilna reng reng chu Form 7-na hmangin (A nnex-ure 4.3) paih tura a duh hming chu a chhan nen ziaka thehluh tur a ni.
4. T ih dik tir tur chuan Form 8 (A nnexure 4.4) hmangin tih dik dan tur leh tih dik loh hming chu thehluh tur a ni. T ih dik ngai leh paih ngai leh thun thar ngai reng rengah chuan Form 8 hi hman tel vek tur a ni. E lectoral R oll-a mahni thlalak chuang tawh thlak thleng duh leh telh duhte chuan an thlalak copy dang Form 8 rual hian an thehlut tur a ni.
5. Mi tupawh; a awmna Constituency pangngai chhunga part danga insawn a duh chuan Form 8A (A nnexure 4.5) hmangin dilna a thehlut tur a ni.
6. Sorkar hnathawk leh Sipai/Police; Service Personnel (A nnexure 4.11) te chuan Form for Declaration hmangin an duh chuan Sorkar hnathawk an nihna anga an post-na hmuna vote thlak lo va, anmahni mimal hmun ngheta awm an nih anga vote thlak duh an nih chuan Form 6 hmangin dilna an thehlut tur a ni.

#### **Receipt of Claims and Objections:**

1. Draft Roll tarlan hun a liam tawh chuan thun belh duh leh paih duh dilna chuan a mawhphurtu Officer hnenah hun tiam ral hmain a thleng tawh tur a ni. Hun tiam a ral tawh chuan chutiang dilna chu pawm a ni twh lo. Chutianga ennawna hun a liam tawh chuan F inal Roll chu eng hunah pawh tarlan theih tura peih a ni tur a ni.
2. Summary Revision leh Special Summary Revision-a hlawpa dilna lut pawm a ni lovang.
3. BLO-te chuan mimal dilna chauh an pawm tur a ni. A maherawhchu chhungkaw khat ami erawh chu vawikhatah mi pakhat aia tam pawh pawm theih a ni ang. Belh leh paih tur a hlawma mimalin emaw; pawl hoin emaw, political party-in emaw an thehluh chu pawm loh tur a ni. Chutiang bawkin a hlawpa dilna daka thawn pawh pawm loh tur a ni.

4. Dilna BLO in a dawnte chu Form No. 9, 10, 11, and 11A hmangin Designated Officer Office-ah a tarlang tur a ni.

**Preliminary checking of Forms at their presentation:**

1. Acknowledgement/receipt paih leh dilnaah pek chhuah vek tur a ni. Chutianga Acknowledgement/receipt pek chhuah hma chuan dilna form dawnte chu uluk taka a hnuaia tarlang hian check tur a ni.
  - i) Form chu a hlawmpui a\anga pawh thlak emaw a hlawmpuia thehluh a ni tur a ni lo.
  - ii) A hnuaia hming sign awm lo chu pawm tur a ni lo. Diltu in a hnuaia hming sign-na turah a sign emaw a kutzungpui emaw a nem loh chuan pawm tur a ni lo va, midang hming sign sak leh kutzungpui nem sak pawm a ni lo. Form 6, 7, 8 leh 8A signature emaw zungpui thla emaw chu hmun ruat bikah an pe tih a entir a, lekhaziak thiamin hming a sign ang a, lekhaziak thiam loin a kutzungpui a nem tur a ni. Chu chu Registration of E lector Rules 1960-a rule 17-in a phut ang a ni a. BLO in chutiang nilo leh ti lo te chu an dilna a pawmsak tur a ni lo.
  - iii) Form fillup thuah eng column mah blank-a dah tur a ni lo va, E lectors ten dilna an chhangkim thei lo a nih pawhin blank-a kalsan loin 'not known' dah tur a ni.
  - iv) Dilna lekhka famkim lo chu pawm loh tur a ni.

**List of supporting documents as proofs of Date of Birth and Residence:**

1. **Date of Birth:**
  - i) Date of Birth chu Municipal Authorities emaw Registrar of Births & Death emaw Baptisma Certificate emawa tarlang tur a ni emaw
  - ii) Government/recognized School a\anga pianni chuanna Certificate emaw zirna in eng emaw in chutiang ang chuanna ama hnena a pek Certificate emaw

- iii) A diltu chu Pawl 10 emaw a aia tam pass a nih chuan a pianni chuanna Class 10 marksheet a keng tel tur a ni.
- iv) Eng Class ber emaw marksheet emaw Certificate emaw a pianni chuanna a nei tur a ni.
- v) Class 8 marksheet a pianni chuanna a neih chuan
- vi) Class V marksheet a pianni chuanna a nih chuan
- viii) A diltu chu Class 10 a la tlin loh chuan Annexure 4.10 anga a nu emaw a pa emaw Form hman tur bik hmanga a pianni a tarlan sak chuan
- viii) Municipal Corporation/Municipal Committee Member emaw Gram Panchayat-a Sarpanch emaw in a diltu chu lekhaziak thiam a nih loha a nu leh pa an thih tawh ve ve chuan a diltu chu kum tling a nih dan an ziah sak thei ang.

## 2. Place of Ordinary Residence:

- i) Bank / Kisan / Post Office current Pass book, emaw
- ii) Ration Card dilna emaw Passport / Driving License dilna emaw Income Tax Assessment dilna, emaw
- iii) Tui bill form hnunung ber emaw telephone bill hnunung ber emaw gas connection bill hnunung ber emaw address hnunung ber chuanna emaw inkhata chenpuite hming emaw a awm tur a ni.
- iv) A diltu lekhathawn hmuh (dak in kaltlang ngeia a hmuh chu a awm tur a ni.)

## Handling of forms thus received:

BLO chuan Duplicate copy siamin, thun dilna reng reng form 9-ah a ziak lut tur a ni. (Annexure 4.6). Hming telh tawh paih tura dilna Form 18-ah a ziak lut baw k ang. (Annexure 4.7). Thil dang fello avanga hnawl tura ngenna chu Form 11-ah a ziak lut ang. (Annexure 4.8). Mahni awmna sawn avanga transfer dilna chu Form 11A ah a ziak lut tur a ni. (Annexure 4.9). BLO chuan chutiang

tak chuan a lehkha dawnte chu a siam fel tur a ni a, a copy a siam zinga pakhat chu ama office-a notice board-ah a tarlang tur a ni a, E R O hnenah dan angin ziakin a thlen tur a ni.

### **Preparation of Supplements:**

1. Revision period chungin hming belh/paih leh insawnte kha a hranga (Supplement) siam tur a ni a. Final publication hmain Electoral Roll puiah telh tur a ni.
2. Hming paih an awm chuan Supplement-ah a chhan fel taka tarlan tur a ni a, chu chuan midang serial no. emaw a tidanglam chuang lo vang.
3. Supplementary roll hi pakhat aia tam te pawh a awm mai thei a, chutiang a awm a nih chuan a pheik no. leh a serial no. chu a hrangin fel taka siam tur a ni. List a\anga paih a nih pawhin paih an nih chhan fel taka ziah tur a ni.

### **Continuous updation:**

1. Continuous updation hi roll final publication neih a\anga draft publication inkara siam \hat ngaite siam \hatna a ni.
2. Inthlanna neih lain nomination theih theih ni hnuhnung ber a\anga inthlan zawh ni thlengin continuous updation of electoral roll hi tih theih a ni lo vang. Tih dik tur emaw, paih emaw, belh dilna emaw reng reng chu pawm theih a ni lo.
3. Hming thun/paih te hi englai pawhin a tih theih a, hei hi mi nawlpui ten kan hre lo fo. Chuvangin Booth Level Officer-te chuan belh leh paih emaw correction tih ngai emaw transfer emaw chungchang tih theih dan hi an puangzar reng tur a ni.
4. Continuous updation-a belh leh paih leh transfer emaw tihdik ngai an tih reng reng register-ah fel takin an zia lut tur a ni.
5. Continuous updation-a dilna thar an dawn leh an hmuhte chu draft roll thar angin an siam ang a, an tarlang tur a ni.

6. T hil \ul ang zawng zawng an tih zawh tawh hnu chuan final roll-ah serial no. chhonzawmin telh leh mai tur a ni.
7. Belh emaw paih emaw tihdik thar emaw a awm a nih chuan concern officer hnenah hriattir vat tur a ni.
8. T hla thar hmasa ber ni 7 hmain chung thil siam a copy pakhat chu DE O / ERO / AERO hnenah computer hmanga electoral roll-a tarlan turin pek nghal tur a ni.

## CHAPTER-VII ENROLMENT OF OVERSEAS ELECTORS

1. Section 20A of the Representation of the People Act, 1950 (Representation of the People (Amendment) Act, 2010 en la). February 10, 2011 a\anga hman \an tak angin, Overseas E lector, entir nan India mi zirna avanga emaw, hnathawhna avang emawa mahni rama awm lo, mi rama awm a, a ram mi nihna nei bawk si lote, electoral roll-a an hming la chuang ve lote chu an passport-a a chuan anga India rama an awmna bial (Constituency) electoral roll-ah an hming zia k luh theih a ni ang.
2. Rule 8A of the Registration of E lectors Rules, 1960 danah chuan overseas electors, India ram mi, India State emaw Union Territories chhunga chenna nghet nei a nih a, 01. 01. 2011-a kum 18 tling a nih bawk a, a hming E lectoral Roll-a zia k luh a duh chuan ama passport-a Constituency E lectoral Roll-a inzia k lut turin Form 6A (A nnexure 4.2) in dilna a siam thei ang Dilna hi lehkha pawimawh tarlante leh kaihhruaina lehkha te nen Constituency Reg-istration Officer hnenah thawn tur a ni ang. E lectoral Registration Officer hnenah mahni ngeia thehluh a nih chuan Original Passport endik atan ken tur a ni a, Daka thawn a nih chuan passport-a a pawimawh lai phekte at- tested photo copy thil tel tur a ni ang.
3. Dilna Form 6A -a thil tel lehkha pawimawh Daka thawnte hi BLO ten an lo finfiah ang Chumi ti tur chuan passport-a anmahni chenna in ngei BLO- te hian an va tlawh ang a, diltu chhungkhat lainate an awm a nih chuan lehkha pawimawhte chu an finfiah tir ang a. T in, an lainate an awm loh chuan emaw, an lo enpui \ha lo emaw, E RO chu lehkha pawimawh endik thuah a lungawi tawk lo a nih chuan heng lehkha pawimawhte hi diltu awmna rama Indian Mission Office-ah finfiah tura thawn tur a ni ang.
4. Polling Station-a vote thlak dawna overseas elector-te endikna hi an pass- port zulzuia tih tur a nih avangin overseas elector-te hian an original pass- port an keng ngei tur a ni ang.



## CHAPTER-VIII ENROLMENT OF SERVICE VOTERS

1. Service Voter chu Service qualification nei a ni tur a ni. Sub-Section (8) of Section 20 of Representation of the People Act, 1950-in a sawi angin Service qualification tih awmzia chu –
  - a) Indian Union hnuai armed Forces member emaw,
  - b) Army Act, 1950 (46 of 1950) in a huam Force member.
  - c) State Armed Police Force member ni a, chu state pawna hna thawk emaw,
  - d) India sorkarin ram pawna hna thawk tura a lak.
2. An hna avanga hmun danga awm pawh nise Service qualification neite chuan anmahni khuaah service voters angin an inziaklut thei a, an duh zawk a nih chuan an hnathawhna hmunah pawh general elector angin ziah luh theih an ni.
3. Service voter nupui, a pasal nena awm chu a pasal awmna Constituency-a Service voter anga ngaih a ni ang. Armed Force voter chungchangah erawh chuan Form 2 (Annexure 5.1) emaw Form 2A (Annexure 5.2) a inpuanna (declaration)-a nupui chu a awmpui ngei tur a ni. Hei hi mipa Service voter nupuite tan chauh a ni a, hmeichhe service voter pasalten he ham\hatna hi an nei ve thei lo.
4. Enumeration (hming chhiar) hun laiin an chhungkaw member zingah awm mah se service qualification neite chu an chhungkaw member dangte nen general elector anga chhiar tur an ni lo vang.
5. Chuti ang bawkin Service voter nupui, a pasal thawhna hmuna awm, enumeration tih laiin an inah awm mahse general elector anga chhiar ve tur an ni lo.
6. Engpawhnise, service qualification neiin dan pangngaia a kawppui nen a thawhna hmuna hun rei tawk an awmho a nih chuan enumeration beihpui

neih hunah general voter anga chhiar theih a ni ang a, tin, a tlangpui enumeration ennavnnaah chuan Form 6-a ama ngenna anga tih a ni ang. Hetiang thilah chuan Service voter leh a kavppui a\angin anmahni inpuanna (declaration) prescribed format-ah (Annexure 4.11) ziah luh tur a ni ang.

7. Hnathawh nei laite an awmna Constituency electoral roll-a hming la chuang lo, tuna an thawhna hmuna an chungte nena hun rei tak awmte chu electoral roll-ah thunluh theih an ni ang.

## CHAPTER IX ELECTOR PHOTO IDENTITY CARD (EPIC)

1. Electoral Photo Identity Card (EPIC) chu Electoral Registration Officer in Rule 28 of R.E. Rules zulzuia a pek, nihna tarlanna lehkhawimawh a ni. EPIC-ah hian elector chanchin kim - hming, nu, pa, pasal hming, pianni leh kum, sex (mipa/hmeichhia), address leh elector thlalak a awm tur a ni. Annexure 6-ah EPIC format a en theih ang
2. EPIC hi lehkhawimawh elector-in vote a thlak dawn hunah a nihna dik tak lantirin, a ken ngei ngei tur chu a ni.

### Format of EPIC

3. Election Commission-in a duan fel tawh angin EPIC len lam chu a kham phei zawngin 5.0cm a tung zawnga 8.4cm a ni. Thlalak chu elector hmaihuan 2.4cm x 1.8cm-a lian a ni tur a ni. Hming, pa/nu/pasal hming, sex (hmeichhia/mipa), pianni/kum a chuang ang Electoral roll-ah hian pianni a chuang lo a, kum zat chauh ziah a ni. Kum hi Form 6-a pianni inziahlung ang lak a ni. Chuvangin EPIC atan bik hi chuan pianni hi Form 6 a mi lak tur a ni ang. Pianni hriat a nih lohva, emaw Form 6-a ziah a nih bawkh lohva, kum zat chauh ziah a nih chuan a kum zat a\anga a pian kum chhut chhuah tur a ni ang a, pian kum chauh chu EPIC-ah Date of Birth tih hmunah dah mai tur a ni ang.
4. EPIC-ah hian elector thlalak chhut kai leh thlalak veilam awl laia Security hologram chhut kai a awm a. EPIC hnunglamah chuan elector address leh EPIC pechhuaktu ERO hming ziah (signature) a awm.
5. Commission thu angin EPIC chhutna atana lehkhapuan (paper) hman hi 165 GSM aia tlem lo ni se. Lehkha (paper) phekk leh lam chauha chhuta thleh a nih chuan EPIC chhutna paper hi 80 GSM aia tlem lo ni se. EPIC laminate (thuah) nana hman polyester film hi 125 micron-a chhah tal ni thei se.

### **E PIC buatsaih leh pekchhuah a nih dan:**

6. E PIC buatsaiha siam tur hian E RO emaw DE O emaw CE O in ti thei tur, mite a zawng chhuak ang a, buatsaihna hun thawl \ha tawk pawh a pek a ngai ang. A pawimawh ber chu elector thlalak a ni a, chuvangin elector-te thla la turin hetiang tihna Designated Photography Locations (DPLs) emaw V R E Cs emaw AC/District tinah an awm a, chungte chu hman tur an ni ang.
7. E PIC hnunglamah hian elector address leh E PIC pe chhuaktu E RO signature leh a nihna (designation) a awm a. T in, E RO stamp hi amah E RO chauhin fimkhur taka a kawl tur a ni.
8. Hetianga buatsaih fel E PIC chu laminated (tuam) fel a, midang kuta hlan lo va amah elector ngei kuta pek tur a ni.

### **E PIC pekchhuah chungchangah hriatturte:**

1. E PIC vawi khat pek chhuah a nih tawh chuan ram chhung leh pawnah hman theihin a nung a, a awmna Constituency a \angin khawi hmunah pawh insuan mahsela, E PIC dang pek hran a ngai tawh lo vang. E PIC pekchhuah a nihna chhan ber chu Electoral Roll-a elector leh a hming enfiah nan a ni a, khawi Assembly Constituency pawh nise E PIC hi rintlak a ni.
2. E PIC pekchhuahnaah hian endik ngai tam tak a awm thei a. Vavikhatna atana elector hnen a E PIC pekchhuah a nihin Electoral Roll-a a inziahlunha anga pek a ni tlangpui a. Electoral Roll-a a hming dah a nih hnuah ama address leh a thlalakte endik leh a ni a, chumi hnuah E PIC pek chhuah chauh tur a ni ang. Diltu chu a vavikhatna atana elector a nih chuan Part IV of the Form 6-a ama inpuanna (declaration) a \anga endik tur a ni ang.
3. Elector, electoral roll-a thun tawhin E PIC la dawng lo nia a insawi chuan thil awmzia sawifiaha inpuanna a hnen a \anga lak tur a ni ang. E PIC pek chhuah hmain a awmna hmasa Constituency-a a inziahlun dan Part IV of the Form 6 a \anga E PIC pekchhuah a la nih loh thu chian a ngai ang. T in, elector address chhui hleih theih a nih loh chuan E PIC pek chhuah tur a ni lo ang a, tun hmaa a awmna address kimchang dik tak pe tura hrilh ni se. Chutih hnu pawha thil harsa ala nih pawhin E PIC pek chhuah hmain thil fimkhur taka chhui zui ni se.

4. Elector, EPIC pek tawhin Constituency a\anga a insuan avanga EPIC thar a dil chuan a awmna hmasa a\anga a chanchin kimchang leh a EPIC-a ama chanchin kimchang lak tur a ni ang Tin, elector-in a EPIC kha thuneitute hnenah a hlan (surrender) tur a ni ang. Elector-in chhui hleih theihloh address a pe a nih chuan EPIC pek chhuah tur a ni lo vang a, tunhmaa a awmna khua address dik leh kimchang pe tura hrilh tur a ni. Hengte hi tuna a awmna adresste leh a original EPIC-te endik a nih hnuah elector hnenah EPIC number pangngai pek chhuah tur a ni ang a, hemi atan hian elector in -25/- a pek a ngai ang Tin, EPIC tharah hian "DUPLICAT E" tih a chuang tur a ni lo vang.
5. Elector hnenah EPIC pek chhuahah dik lo, siam \hat ngai a awm a, siam\ha tura elector-in a dil duh chuan Form 8 hmangin siam\hat ngaite siam\ha turin a dil thei ang Form 8 chu pawm a nih hnuah leh tihdik ngaite tihdik a nih hnuah EPIC thar number erawh a pangngai chu elector hnenah pek chhuah tur a ni ang a, "DUPLICAT E" tih a chuang tur a ni lo ang
6. Elector-in a EPIC a tihbo thu thuneitute hnenah a thlen chuan a hnen a\angin a tihbo dan declaration lak a ni ang a. EPIC dang a hma ami ang, number pawh pangngai pek leh a ni ang a. EPIC tharah chuan "DUPLICAT E" tih ziak tur a ni ang.
7. EPIC pek chhuak leh tura dil a tlem theih nan tiin a hmingin fee -25/- a siam a. Heng thilah hian fee pek a ngai lo ang:-
  - a) EPIC pekchhuah hmasak ber atan
  - b) Electoral Machinery lam a\anga tihsual a avmin
  - c) Vanduaina hrang hrang - tuilian, thlipui, lirnghing etc. avanga EPIC a bo va, a chhiatin.
8. EPIC pek chhuah hmasak ber hi a thlawm (free) a nih a, vawi khat pek chhuah tawh chu damchung atan ram chung khawiah pawh a pawm theih (valid) a nih avangin election laia a nihna lanchian tirna tura fee a chawi \ulna a awm lo vang. Awmna hmun (address) thlak avang emaw thil dang avanga

elector-in a dil a nih chuan thil enfiah hnuah a E PIC hlui chu a hnen a\anga laksak phawt tur a ni a. E ngti ang kawng zawng pawhin elector pakhatin E PIC pahnih a nei thei lo.

**E PIC-a pawimawh zualte:**

27. E PIC-a elector chanchin kimchang chuang hi a hlutzia, a nghehzia, a pawimawh zia kan hriat a \ul hle a. E PIC number hian elector chanchin kimchang leh E PIC a inziakte inzawmna a entir a. E PIC number hian elector hlutna a entir avangin a pawimawh em em mai a, tihbo chi a ni tawh lo. E lectoral Roll siam \hatna atana in tina beihpui thlak a nih pawhin E PIC number hi chu vawn him reng tur a ni.
28. E PIC hi nihna lanchiantirtu lehkha pawimawh (document) mai a ni a, E PIC neihve ringawt hian vote thlak theihna min pe lo. E lectoral Roll-a an hming chuangte chauhin he vote thlak theihna (right to vote) hi an nei a ni. T in, E PIC hian E lectoral Roll-a an hming chuangte nihna a sawifiah a, an vote thlak theihna hmang turin a \anpui a ni.

## CHAPTER X BOOTH LEVEL OFFICERS REGISTER

**BLO's register comprises of the following two parts:**

Annexure-I hian roll-a electors tuna awm mekte hi a huam a, tih dikna awm ang ang te chu column mil zelah dah tur a ni.

Annexure-II ah hian BLO in information update thar leh hriattur pawimawhte a tarlang a, tichuan electors awm thar te leh kum tling tharte chu chhinchhiahin a tifel (update) ang (Annexure 7.1)

### Annexure-I

- 1) BLO-te chuan electoral roll an hnena pek te chu a dik leh diloh a thliar fel ang a, elector tupawh tihdik ngai, hming, kum, sex, relation, house no., EPIC no. etc. chu a kual khung anga tih dik ngai chu a tarlang tur a ni. Heng hi pentui sena tih tur a ni. Electors chung chang, hming, surname, relations name leh house no. te sap \awng (English) leh anmahni awmna state \awng tlanglawn berin an tarlang tur a ni. Chu chu Electors an entir ngei tur a ni. Anmahni awmna State \awnga an tarlanah chuan diklo a awm a nih chuan pentui sena kual khungin a ziahna tur column-ah a dik chu ziah leh tur a ni. Chutiang chiah chuan English-a inziakah chuan diklo a lo awm palh a nih chuan a diklo chu kual khungin a ziahna tur column ah a dikin a ziak \ha leh tur a ni.
  - i) Electors thlalak chu a dik a nih chuan column-I ah ✓ dah tur a ni a, thlalak chu a diklo a nih chuan × mark dah thung tur a ni. Chutah chuan thlalak dik tak a awm ngei tur a ni a, thlalak a awm lo a nih chuan thlalak awmna tur hmunah chuan "No Photo" tih ziak tur a ni.
  - ii) EPIC No. tihsual a nih chuan pentui senin a kual khung ang a, correct EPIC no chu a tarlang tur a ni.

- iii) Column No. 3 ah chuan E lectors birthday ziah tur a ni, a birthday chu tarlan a nih chuan a dik leh dikloh verify tur a ni. A diklo a nih chuan pentui sena kual khungin a hnuai a dik chu ziah leh tur a ni. Birthday verify nan chuan school leaving certificate te, birth certificate te, caste certificate te, BPL certificate emaw leh sorkar office certificate siam sak theitu in certificate a pek dangte hmanga dah tur a ni. Chutiang a awmlo a nih chuan pian ni leh kum dik hriat a nih loh chuan hemi column hi chu blank-a dah mai tur a ni.
  - iv) House No. tih dikloh a awm a nih chuan pentui sena kualkhung lehin a dik chu column 4-ah ziah leh tur a ni.
  - v) Hming diklo dahluh palh a awm a nih chuan a hming chu pentui sena kual khung lehin a dik chu ziah leh tur a ni. Chumi bakah chuan Form no. 8 hmanga tih tur a ni ang.
  - vi) A chhungte hming tih dikloh a awm a nih chuan pentui sen bawka kual khung lehin Column 6-ah ziah leh tur a ni.
  - vii) E lectors chu Sex tih dikloh a awm chuan column 6-ah pentui sena kualkhung lehin a dik chu a hnuai a ziah leh tur a ni.
  - viii) E lectors kum (Age) chu tihdik loh a awm a nih chuan pentui sena kualkhung lehin a dik chu ziah tur a ni. A dik chu date. 01. 01. 2011-ah a kum dik tak anga ziah tur a ni.
- 2) Column 8-naah chuan E SR (E =E xpired, S=Shifted, R=R epeated) chu tarlan tur a ni, a hnuai ami ang hian.
- i) Column 8-ah hian mi boral tawhte thihni chu tarlan tur a ni a, Form 7-ah hian a mitthi chhungte hming pawh chu ziah tur a ni. Form No. 7 hi hman a nih chuan Column 10-ah hrilhfi ah leh tur a ni.
  - ii) E lector chu hmundangah a insawn a nih chuan Column 8 ah "Shifted" tih dah tur a ni. A theih hram chuan Form 7-ah pawh tarlan hram a \ha, Form 7 hman a nih chuan Column 10-ah hrilhfi ah leh tur a ni; mahnia



insawn nge a nih a, chhungte nen tih tarlan tur a ni. Chhungte nen an insawn a nih chuan "Shifted with family" tih dah tur a ni. A mah chauha insawn a nih chuan "Shifted without family" tih column 10-ah chuan dah tur a ni a. Chutianga verification neihlai chuan BLO chuan chawplehchilhin Prescribed Form hmangin notice a pe tur a ni a, a pek chhana pawh chu a tarlang tur a ni; a hnuaia tarlan ang hian;-

- 1) Awmna sawn / in chhuahsan / midang hnena luah chhawntir
  - 2) Pem / E izawna avanga pem
  - 3) Nupui pasal nei
  - 4) In\hen
  - 5) Indang neihsan
  - 6) A chhan dangte
- iii) 1) Tu hming pawh roll-a awm nawn a awm chuan Column 8-ah "Repeated" tih ziah tur a ni. A awmna part no leh serial no chu column 10-ah awm nawn a ni tih tarlan tur a ni.
- 2) A awmna address-ah chuan kum engzat nge a awm tawh tih column 9-ah tarlan tur a ni.
  - 3) Annexure-I a information ziahlulte reng reng chu uluk leh fimkhur taka ziahluh tur a ni a. Electoral roll-a thun/paih/siam\hat chu Electoral Registration Officer thuneihna a nih angin, a thu angin a kal ang.

#### 4) Annexure-II

- (i) BLO chuan khawilayah emaw Society thar / apartment / colonies etc. an awm a nih chuan uluk taka finfiahin roll volume-a thun tur hian buatsaih tur a ni. Chung mite chu khawilai roll-ah emaw an awm tawh nge awm lo tih a hre ngei ngei tur a ni.
- (ii) **Listing of immigrant electors:**  
Electors-te chu hmun dang a\anga lokal an ni emaw, inbawkkhawm thar an ni emaw, Chiang takin a hre tur a ni a, a hrilhfiyah bawh tur a ni.

In pakhata awm elector register felsa in a chhuahsan hnuah midangin an rawn luah leh a nih pawhin annexure-I a column 10-ah "Shifted" tih a luah hmasatu hmingah kualkhungin pentui sena ziah tur a ni.

(iii) Polling Station area huamchhunga mi chengte hriatchian tur a ni. Chhungkuaa member awm zat a\angin mipa leh hmeichhia, puitling leh naupangte chhinchhiah tur a ni; chuta \ang chuan chulai vela mi chengte chinchang chu a hre tur a ni, tichuan kum 18 tling thar turte pawh a hranpain a chhinchhiah tur a ni.

- 5) Register-a Annexure-II a English leh tualchhung \awnga inziakte chu a dik leh dikloh finfiah ngei tur a ni a. Hming, Address, Pin code-te chu a diklo a awm a nih chuan pentui sena kualkhungin a dik chu ziahlan leh ngei tur a ni.
- 6) Voter - Population Ratio chu part-a awm tur a luhkim hnuah chauh siam tur a ni a, a hnuai formula tarlan ang hian tih tur a ni.

$$\text{Voter Population Ratio} = \frac{\text{Total voters of the part} * 100}{\text{Total Population of the part}}$$

e.g Part khat area-a population chu 1600 a nih a, voters chu 1000 a nihin hetiang tih tur a ni.

$$\begin{aligned} \text{Voter Population Ratio} &= \frac{1000 (\text{Total voters of the part} * 100)}{1600 (\text{Total population of the part})} \\ &= 62.5\% \end{aligned}$$

7) A hma ami zawng zawng hi tihfel hnuah a hnuai mi ang hian tih tur a ni.

(1) No. of voters in age group 18 - 19 = \_\_\_\_\_

(6) No. of voters in age group 60 - 69 = \_\_\_\_\_

(2) No. of voters in age group 20 - 29 = \_\_\_\_\_

(7) No. of voters in age group 70 - 79 = \_\_\_\_\_

- (3) No. of voters in age group 30 - 39 = \_\_\_\_\_
- (8) No. of voters in age group 80 - 89 = \_\_\_\_\_
- (4) No. of voters in age group 40 - 49 = \_\_\_\_\_
- (9) No. of voters in age group 90 - 99 = \_\_\_\_\_
- (5) No. of voters in age group 50 - 59 = \_\_\_\_\_
- (10) No. of voters in age group 100+ = \_\_\_\_\_

Total voters.....=

A tawpah BLO in a hming a sign tur a ni.

**Statement hrang hrang BLO in a lakkhawmte:**

BLO chuan statement hrang hrangah information a lakkhawmte chu a ziak lut ang a, ERO ah a theh lut ang (Annexure 7.2)

## CHAPTER-XI

### BOOTH LEVEL AGENT (BLA)

1. Recognized Political Party-ten roll revision neihlaia BLO-te \anpui turin, BLA an ruat tur a ni. Booth Level Agent-te chu Part tin atana ruat an ni a, an awmna part-ah duty tura beisei an ni.
2. Mi, BLA atana appoint an nih tawh chuan amah ruattu Party-ten an withdraw a nih loh chuan kum dang zel atan pawh BLA a ni zui zel ang
3. Sorkar hnathawk / Local Authority / PSU -te chu BLA tana ruat theih an ni lo.
4. BLA -te chuan an appointment letter (Form 1D-BLA -2) chu draft publication tih hnuah Polling Station ah BLO hnenah a pe lut tur a ni ang
5. Chutiang ang appointment letter kengtu hnenah chuan BLO chuan electoral roll-a a part chan tur chu a pe tur a ni.
6. Chumi electoral roll part chu BLA hnena pek a ni a, chu chu Registration of Electors Rules 1960, Rule- II in a sawi anga a thlawna pek tur a ni.
7. BLA te ruat an nih loh chuan BLO chuan roll copy chu tu hnenah mah a pe tur a ni lo.
8. BLA in mipui a \angin claims leh objection a dawng tur a ni lo. Electoral Roll-a in thun luh leh paih leh correction thua mipui a zirtir chauh tur a ni.
9. BLA te chu Special Campaign ni ruat bikah chuan thun luh tur leh paih tur emaw siam lain a awm ve tur a ni a, a \ul angin BLO te an pui bawk ang. Mitthi te, pem tawh te, vote thun nawnte chu a list a siamin BLO hnenah an thehlut ang.
10. BLO te hi BLA te nena inbe thei reng tura beisei a ni.

## CHAPTER-XII

### NATIONAL VOTERS DAY

1. Election Commission chuan a din \an ni 25<sup>th</sup> Jan. denchenin kum tin National Voters Day hmang turin a ti a. Election Commission-in a tum ber chu a tam thei ang bera voters tipungin, chumi hun hmang \angkaiin U ni-versal adult franchise tih hlawhtlin nan leh India ram democracy hlutna tilang zual zel tura ruahman a ni. National Voters Day chuan India mipuite thinlungah democracy hlutzia leh a ropuizia mite thinlunga tuh hi a tum ber a ni.
2. Hetih hunlai hi electoral roll-a vote thun tharte 25<sup>th</sup> Jan a pianga a hlutna hriattir leh tarlan tur a ni a, chu chuan voters-te thinlungah inthlan kal tlanga ram hruaitute ruat an nih tarlanna pawh a ni. Voters / electors-te thinlungah pawh an mawhphurhna leh an hlutna tarlan a ni.
3. Election Commission chuan khawpui berah inthlang ram hlutna leh sorkar siamna a mawhphurhnate leh pawimawhna tarlang turin hma a la \hin.
4. State-ah chuan CEO kaihhruainain, DEO ten a \ul leh pawimawh ang zelin hma an la ang; hetiangin:
  - i) DEO/ERO te ruahmannain Polling Station tina BLO ten 25<sup>th</sup> Jan a piangin vote nei tharte lawmpuina hun a buatsaih tur a ni a. Badge siamin "Proud to be a voter - Ready to vote" tih chu voters tharte hnenah pek \hin tur a ni. DEO in chutiang anga ti tur chuan programme leh thil \ul dang a buatsaih ang.
  - ii) AERO leh ERO te chu anmahni awmna constituency chungah chumi ni a vote nei tharte an tel tamna ber function-ah an tel \hin tur a ni.
  - iii) DEO chuan District Headquarters-ah tlawmngai pawlte leh media te leh zirna inte emaw nena \ang tlangin voters education chungchang an puang zar tur a ni a, chutah chuan EPICS pawh sem nghal tur a ni.

- iv) State leh U T -a CE O chuan State Capital-ah tlawmngai pawlte leh media te, state sorkar kutke dangte nen he National Voters Day hlutna leh pawimawhna puangzar tur hian programme a siam ang a, voters tharte hnenah E PICS pawh a sem bawk tur a ni.

## CHAPTER-XIII

### ROLE OF BOOTH LEVEL OFFICER IN PREPARATION OF ROLL

#### 1. Knowledge, skill and attitude needs for BLO:

- Election Commission hnuai a eng emaw chen atan RP Act, 1950 Section 13 cc in a tarlan angin Commission thu ang zela awm tura dah a nih a inhre tur a ni.
- Ama Official Work bakah BLO a nihna anga a mawhphurhna leh a tihurte a hre tur a ni.
- Form 6, 6A, 7, 8, 8A te felfai takin a fill up thiam tur a ni.
- Supporting document-te a hman dan tur takin a hmang thiam tur a ni.
- A bial chhunga mipui chinchang leh chhungkaw hrang hrangte dinhmun a hre hneh hle tur a ni.
- Ama huamchung amite nen fel takin an inbe thei tur a ni. In tina Survey \ha tak fel tak nei turin dawhtheihna leh finna a nei tur a ni.
- Electors-te lakah hawihhawm leh rinawm takin a awm tur a ni.
- Electors-te lakah a hawihhawm hle tur a ni.
- A hun takah Form te a fill up \hin tur a ni.
- BLO chu mi rilru ngil leh rilru lak pen sak theih mai mai a ni tur a ni lo.

#### 2. Important points a BLO should keep in mind while receiving claims / objections:

- (1) Claim / Objection a awm apiangin acknowledgement / receipt pek tur a ni.
- (2) Acknowledgement pek hmain form-te chu a dik leh dikloh enfel zet tur a ni a, a hnuai a mi ang hi a hrechiang bawk tur a ni.

- (i) Form-te chu a hlawmpui a\anga pawh thlak emaw a hlawmpuiin emaw a dawng tur a ni lo.
  - (ii) A hnuai a hming sign awm lo emaw kutzungpui nem awm lo a dawng tur a ni lo. T hun diltu chu lekhathiam a nih chuan a hming a sign tur a ni a, lekhha ziak thiamlo a nih chuan a hming ziahna turah a kutzungpui thla a nem tur a ni a, form-ah chuan hnuhma dang a kai tur a ni lo; tichuan BLO chuan a hnuai a hming sign awm lo leh kutzungpui thla awm lo chu a dawng tur a ni lo.
  - (iii) Address hmasa leh voters chungchang ziahna column-te chu fel taka fill up tur a ni a, blank-a dah loh tur a ni; hriatloh a awm chuan not known tih hi ziah mai tur a ni.
- (3) BLO-in form 6 a dawn laiin a hnuai a mite hi a enfiah tur a ni:
- (i) Mi, a awmna constituency huamchungah tho a awmna a sawn chuan insawn phalna lekhha, insawn leh inthun leh phalna form 8A hmangin a theh lut tur a ni a, form 6 hman tur a ni lo.
  - (ii) Mi, kum 18 tling tharin inthun a dil chuan form 6-ah a chenpuite vote neisa a tarlang tur a ni a, entirnan pa, nu, nupui, pasal etc.
  - (iii) Pian ni leh thla leh kum te tarlan tur a ni a, a pianni leh thlate a hre lo a nih chuan kum tling a nih dan chu a insawi fiah thei tur a ni
  - (iv) T hun diltu kum 18-25 te chuan an hming leh an chungte / chenpuite vote nei tawhsa te nen a inmil leh mil loh enfiah sak phawt tur a ni. Kum tlinglote chu voter list-ah hian thun reng reng loh tur a ni. A n school certificate birth certificate, baptisma certificate-te a finfiahna atan an nei tur a nia, chutiang neilo an nih chuan an nu leh pate emaw vote nei tawhsa an chenpui te a\angin kum tling a nih dan an tarlang tur a ni. (Annexure 4.10)
  - (v) In thun thar diltu chuan E PIC a lo nei tawh a nih chuan a E PIC chungchang chu form 6-ah ziah tur a ni a, E PIC thlalak pawh chu thil tel tur a ni a, E PIC neilo kum 25 chunglam te chuan a form bikah anmahni chanchin fel takin an ziak tur a ni. (Annexure 8.1)